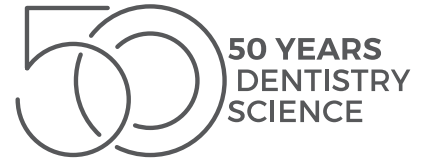




SPECIALS

SEPTEMBER | OCTOBER 2024

NEW ZEALAND



TOOTH WHITENING

Call Courtney Gerlach: 021 400 323



POLA RAPID SUPER. FAST. WHITENING.

Pola Rapid is the new in office whitening treatment that safely whitens teeth in a 24 minute application time.

Pola Rapid's higher viscosity gel enables faster application and removal due to its specially formulated non-stick attributes. Pola Rapid can be extruded quickly, and easily and remains on teeth when applied.

ENHANCED BLUE GEL FOR FASTER APPLICATION

Pola Rapid uses an advanced blue gel for ease of visibility and application. The easy to apply non-stick gel enables faster application and removal.

MINIMAL CHAIR TIME WITH IMMEDIATE RESULTS

A unique 38% hydrogen peroxide formulation that releases active ingredients immediately. In only one visit, Pola Rapid initiates a powerful whitening treatment designed to whiten teeth in 24 minutes. No pre-desensitiser step is required.



3+1* BUY 3,
GET 1 FREE

PLUS
+ LUNA 2
SYRINGE
+ LUNA
FLOW
SYRINGE



- POLA RAPID 3 PATIENT KIT
- POLA RAPID 3 PATIENT KIT WITH OPTRAGATE
- POLA RAPID 1 PATIENT KIT
- POLA RAPID 1 PATIENT KIT WITH OPTRAGATE

**TOTAL
VALUE
UP TO
\$627.00***



DENTAL ADVISOR
PREFERRED
PRODUCT
COMPOSITE:
UNIVERSAL



POLA DAY

HYDROGEN PEROXIDE BASED ADVANCED TRAY TOOTH WHITENING SYSTEM

- Available in **7.5%** and **9.5% hydrogen peroxide**
- High water content
- From 30 minutes once a day



POLA NIGHT

CARBAMIDE PEROXIDE BASED ADVANCED TRAY TOOTH WHITENING SYSTEM

- Available in **10%**, **16%** and **22% carbamide peroxide**
- High water content
- From 45 minutes once a day



POLA FOR ALIGNERS

STRAIGHTEN AND BRIGHTEN TOGETHER

- Available in **10% carbamide peroxide**
- The greatest patient comfort in a whitening kit
- High viscosity gel ensures it can be easily and securely placed into the aligner tray, staying in place

POLA FOR ALIGNERS 4 X 3G



POLA DAY CP

SUPER FAST TRAY TOOTH WHITENING SYSTEM

- Available in **35% carbamide peroxide**
- From just 15 minutes per day tray wear time
- Fluoride Releasing

POLA 4 X 1.3G MINI KIT
POLA 10 X 1.3G SYRINGE KIT
POLA 50 X 3G DISPENSER PACK



SOOTHE

DESENSITISING GEL

- Available in **6% potassium nitrate** and **0.1% fluoride**
- Instant relief of sensitivity - use before or after whitening treatment

SOOTHE MINI KIT



POLA LUMINATE

BRUSH ON & GO!

- No trays required - quick and easy professional brush on tooth whitener
- **6% hydrogen peroxide** low viscosity fast drying gel

POLA LUMINATE

POLA

ADVANCED TOOTH WHITENING SYSTEM

TAKE HOME WHITENING

5+1*
BUY 5, GET 1 FREE

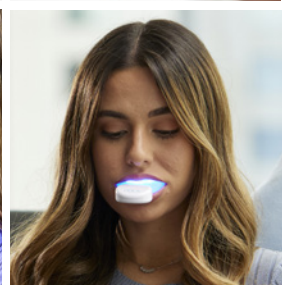
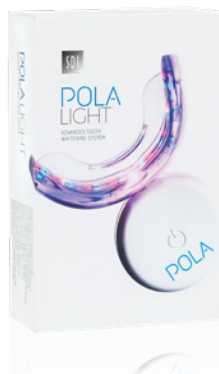
10+3*
BUY 10, GET 3 FREE

ENJOY A BRIGHTER, MORE CONFIDENT SMILE IN 5 DAYS

- No custom trays required
- Reduced patient consult time
- Entry level whitening option
- Great front desk conversation starter

INCLUSIONS

- 1 x Pola LED mouthpiece
- 4 x 3g Pola Day 6% tooth whitening syringes
- 1 USB charging cord
- 1 x Instruction guide





IN-CHAIR POLA RAPID WHITENING BUNDLE!
PURCHASE THE RADII XPERT FOR \$2500.00*
 AND RECEIVE THE FOLLOWING FREE*

- BLEACH ARCH ATTACHMENT** (x1)
- POLA STAND 2** (x1)
- POLA RAPID 3 PATIENT KIT WITH OPTRAGATE** (x1)

AWARDS:
 DA DENTAL ADVISORY BOARD 2024 PREFERRED PRODUCT
 2023 PREFERRED PRODUCT
 2022 PREFERRED PRODUCT
 2021 REALITY DENTISTRY & REVIEWER PRACTICE AWARD

ALLOYS



PERMITE
 HIGH SILVER NON-GAMMA 2 ADMIX ALLOY

- Superior handling characteristics
- Void-free restorations with no marginal leakage
- Extremely high resistance to corrosion

BUY 1 BOX OF ALLOY GET A FREE* STELA INTRO KIT
 CHOICE OF AUTOMIX OR CAPSULE KITS



MAKE THE SWITCH

THE TRUE AMALGAM ALTERNATIVE



GS-80
 ECONOMICAL NON-GAMMA 2 ADMIX ALLOY

- High early compressive strength
- Great corrosion resistance
- Excellent marginal sealing
- Optimal handling characteristics



LOJIC+
 WORLDS FIRST PLATINUM MODIFIED SPHERICAL AMALGAM

- Creamy consistency, soft packing and smooth carving
- Very high compressive strength
- Superior marginal adaptation

ALL COMPOSITES | 3+1^x BUY 3, GET 1 FREE

UNIVERSAL COMPOSITES



LUNA 2

Luna 2 is SDI's standout universal composite, with a unique blend of fillers to deliver outstanding optical and mechanical properties.

- Non-stick handling that maintains its sculpted shape
- Chameleon effect for accurate shade matching
- BPA free

LUNA 2 4g SYRINGE
LUNA 2 20 X 0.25g COMPLETS
LUNA 2 INTRO KIT



AURA EASY

Aura Easy is a universal composite available in 4 simplified shades to ensure easy restorations with reduced inventory.

- 4 shades cover 16 Vita® shades
- Non-stick and easy to sculpt
- Wear resistant with high strength

AURA EASY 4G SYRINGE
AURA EASY 20 X 0.25G COMPLETS



AURA

Aura is a universal composite ideal for layering technique to help clinicians achieve maximum aesthetics with minimal effort.

- Dentine and enamel shades
- High polishability and gloss
- High-strength and wear resistance

AURA DENTINE 4g SYRINGE
AURA DENTINE 20 X 0.25g COMPLETS
AURA ENAMEL 3g SYRINGE
AURA ENAMEL 20 X 0.20g COMPLETS

FLOWABLE COMPOSITES



LUNA FLOW

Luna Flow is an extra strong flowable composite available in two viscosities that offer excellent mechanical and optical properties.

- Effortlessly flows to margins with thixotropic properties
- Excellent strength, radiopacity and wear resistance
- Accurate shade matching

LUNA FLOW/LV 2g SYRINGE
LUNA FLOW/LV BULK KIT 5 X 2g SYR
LUNA FLOW/LV INTRO KIT 4 X 2g SYR

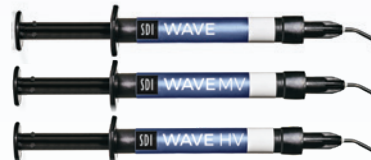


AURA EASYFLOW

Aura Easyflow is a universal flowable composite available in 4 simplified shades with optimised features for every layer of use.

- 4 shades cover 16 Vita® shades
- Thixotropic for maximum control during application
- High flexural strength and radiopacity

AURA EASYFLOW 2g SYRINGE



WAVE

Wave is a universal flowable composite with proven mechanical properties that is available in three viscosities.

- Natural fluorescence
- Three viscosities

WAVE BULK KIT
WAVE SYRINGE

SELF CURE COMPOSITES



STELA

Stela is an innovative high-performance self-cure composite. Stela offers an unlimited depth of cure and low-stress polymerisation with a gap-free interface. There is no need to acid etch or light cure.

- Self-curing unlimited bulk fill
- Gap-free interface
- High bond strength
- Just two simple steps
- High strength

STELA AUTOMIX 1x 8g SYR REFILL
STELA AUTOMIX INTRO KIT
STELA CAPSULE REFILL 50 CAPS
STELA CAPSULES INTRO KIT
STELA PRIMER REFILL 5mL BT

BULK FILL COMPOSITES



AURA BULK FILL

Aura Bulk Fill is a posterior composite with a natural looking finish available in just one universal shade for easy and quick restorations.

- 5mm depth of cure
- Non-stick, waxy consistency
- Low volumetric shrinkage

AURA BULK FILL 4g SYRINGE REFILLS
AURA BULK FILL 20 X 0.25g COMPLETS

BUY 1, GET
10% OFF

BUY 2, GET
15% OFF

BUY 3 OR MORE, GET
20% OFF

RADII XPERT

SMARTER DESIGN.
OPTIMAL CURE EVERY TIME.

Radii Xpert's unique target assist technology enables you to correctly position the light and be confident of the angulation before curing.

RADII XPERT

360°
ROTATABLE HEAD

185g
LIGHT WEIGHT

2.5 HOUR
RUNTIME



RADII-CAL CX

COLLIMATED FOR A DEEPER,
MORE RELIABLE CURE

The collimated beam of the Radii-Cal CX delivers curing uniformity across all curing depths. This ensures a fast and predictable cure for all restorations.

RADII-CAL CX



COLLIMATED
LIGHT



ERGONOMICALLY
DESIGNED



SMART BATTERY
TECHNOLOGY



ULTRAMAT 2

HIGH SPEED MULTI-USE TRITURATOR

- 5-year limited warranty
- Low vibration and extremely quiet
- Accurate and consistent trituration
- Safe and simple to use
- Easy to clean

ULTRAMAT 2

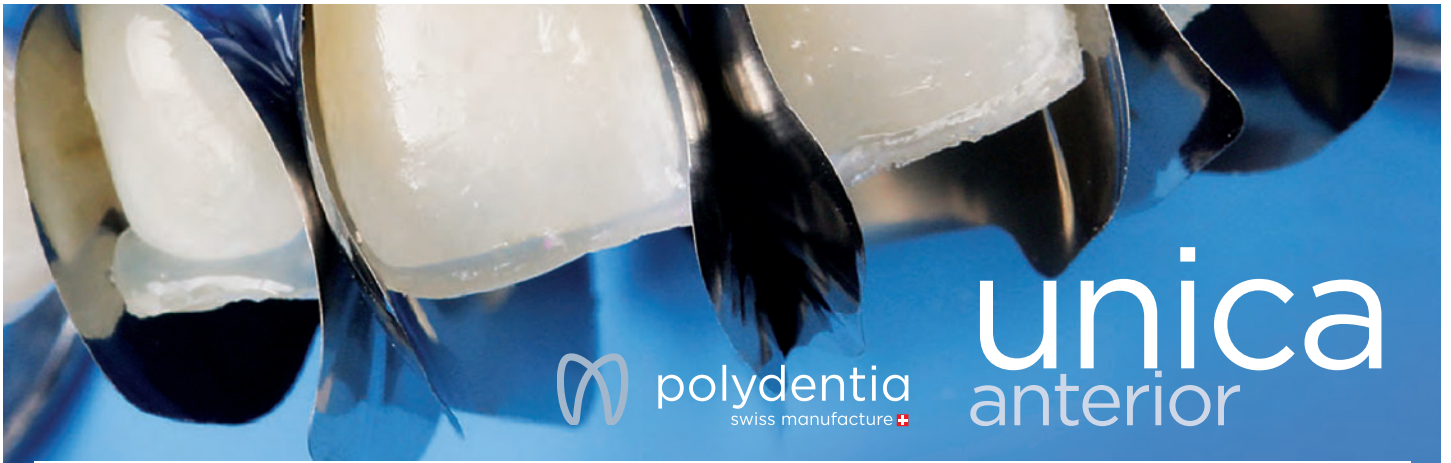


PLASTVAC

TRAYFORM VACUUM MACHINE

- Powerful motor
- Quick and practical
- Suitable for round and square thermoplastic materials of different dimensions

PLASTVAC



BUY 1 UNICA INTRO KIT GET
50% OFF UNICA REFILLS



UNICA INTRO KIT



ANTERIOR MATRICES 12PK
ANTERIOR MATRICES 50PK
MINIDEEP MATRICES 12PK
MINIDEEP ANTERIOR MATRICES 50PK

CEMENTS



SET/SET PP

DUAL-CURED, SELF-ETCHING, SELF-ADHERING RESIN CEMENT

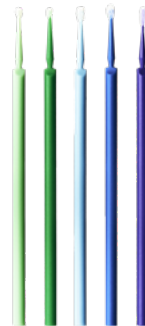
- Chemically bonds to tooth structure and substrates
- Available in capsules and a paste/paste automix syringe system (seT PP)
- Fast and easy - etch, bond and fill with one component

SET 50 CAPSULES
SET PP INTRO KIT
SET PP REFILL

BUY 2, GET 1 FREE

ADHESIVES

BUY ZIPBOND REFILL
GET BOX OF 400 POINTS
FREE



ZIPBOND

DEFEND AGAINST CLINICAL VARIABILITY

- Consistent bond strengths to dentine and enamel
- Wet and dry dentine bonding

ZIPBOND REFILL 5mL BOTTLE
POINTS BOX OF 400

ETCHANT



SUPER ETCH

37% PHOSPHORIC ACID ETCHANT GEL FOR ENAMEL AND DENTINE

- Stays where placed.
- Does not run onto soft tissue
- Washes away easily with water

SUPER ETCH BULK KIT
SUPER ETCH 12GM SYRINGE
SUPER ETCH GEL 15mL BOTTLE
SUPER ETCH JUMBO

**BUY 3, GET 1 FREE
OR BUY 10 GET 4 FREE**